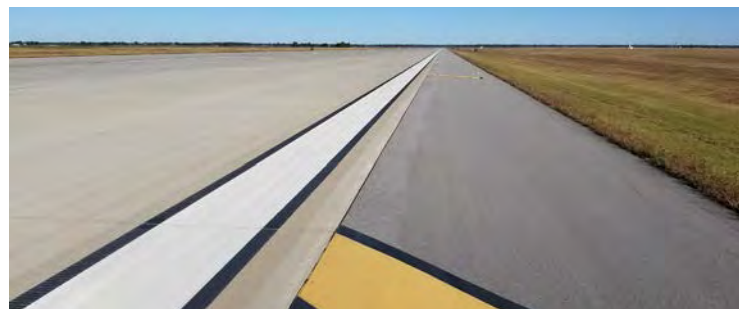


As a JV partner, Mead & Hunt provides full discipline A-E services including planning, engineering, and architecture for vertical and horizontal projects for Army and Air Force installations under the responsibility of the Tulsa District, mainly in Oklahoma, Northern Texas, and Southern Kansas. On this contract, Mason & Hanger is leading all vertical work and Mead & Hunt is leading all horizontal and civil work.



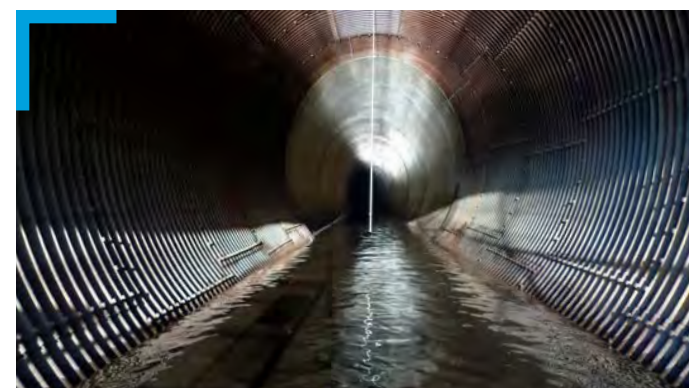
**Repair Outside Runway and Taxiways
Vance AFB, Oklahoma**

Fast-track design for the reconstruction of Runway 17R/35L and Taxiway C, and repair of Taxiways F and G



Broken Bow and Hugo Lake Closure Structure Study and Design – Broken Bow and Hugo, Oklahoma

Feasibility study of multiple temporary gate closures resulting in design of a single segmental bulkhead system for both lakes



**Broken Bow Dam Diversion Tunnel
Broken Bow, Oklahoma**

Analysis of the structure condition, stability, and electrical and mechanical components of concrete-lined diversion tunnel



**Repair Assault Landing Zone (ALZ) Runway 175/355
Altus AFB, Oklahoma**

Removal/replacement of asphalt runway with new concrete grooved surface including 150-FT by 300-FT asphalt overruns

BACKGROUND

- 7 years' experience as a JV
- 10+ years of experience working together
- More than 2,000 available staff
- 5 offices in the Southwestern District (SWD)

EXPERTISE

- Runways and Taxiways
- Military Facilities
- Dams and Levees
- Canals and Pipelines
- Roads
- Environmental

EXPERIENCE

- More than 450 projects in SWD
- 50+ projects together
- 81% of JV CPARS received Very Good or Exceptional rating

CONTACT US



Miro Kurka

Group Leader, Water Resources
miro.kurka@meadhunt.com
918-586-7276



Mike Poe

Project Manager
Mike.Poe@masonandhanger.com
859-280-3551



**Repair/Renovate Building 29
Jefferson Barracks ANG, Missouri**

Repurposed open-bay barracks into an open-office administration facility with adaptable and configurable work spaces



**Webbers Falls Lock and Dam Repair of Scour Holes
Tulsa, Oklahoma**

Repairs of dam's damaged end sill/tailrace wall and filling of scour holes constructed under 45 feet of water