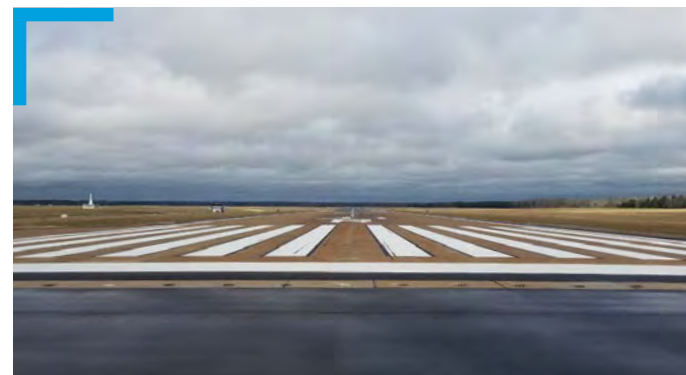
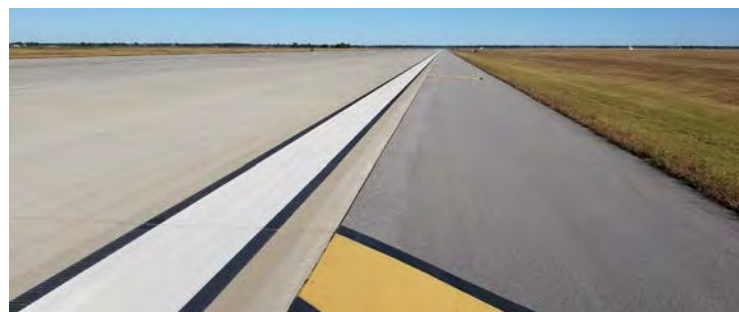


USACE Mobile District Horizontal Architect Engineer (A-E) Indefinite Delivery/Indefinite Quantity (IDIQ)

Contract Number: W91278-20-D-0032
Expiration Date: June 2025



As a JV partner, Mead & Hunt provides full discipline A-E services including planning, engineering, and architecture for horizontal requirements with emphasis on airfields, stormwater, general civil site design, and dams and levees. Projects awarded through this contract are primarily related to transportation, water utilities, water resources, and aviation but may also include roads utilities and other horizontal requirements within the Mobile District area of responsibility (MS, AL, GA, FL).



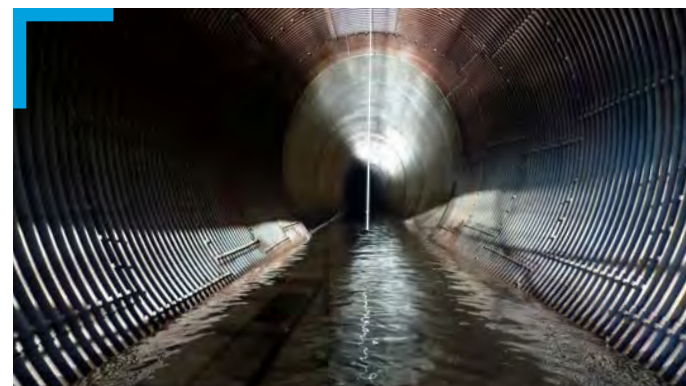
Reconstruct Runway 13L/31R Columbus AFB, Mississippi

Reconstruction of 8,000-FT long by 150-FT wide runway 13L/31R with a combination of concrete and asphalt surfaces



Jackson Bluff Dam Safety Tallahassee, Florida

High hazard dam consisting of decommissioned powerhouse, tainter gate spillway, auxiliary spillway and an earthen embankment



Broken Bow Dam Diversion Tunnel Broken Bow, Oklahoma

Analysis of the structure condition, stability, and electrical and mechanical components of concrete-lined diversion tunnel



Repair Transient Parking Apron 2048 Dobbins ARB, Georgia

Reconstruction of over 10 acres of concrete apron on a transient ramp needed due to poor subgrade soils and aging pavement

BACKGROUND

- 7 years' experience as a JV
- 10+ years of experience working together
- 9 offices in South Atlantic Division (SAD)
- More than 2,000 available staff

EXPERTISE

- Runways and Taxiways
- Military Facilities
- Dams and Levees
- Canals and Pipelines
- Roads
- Environmental

EXPERIENCE

- More than 1,750 projects in SAD
- 50+ projects together
- 81% of JV CPARS received Very Good or Exceptional rating

CONTACT US



Miro Kurka

Group Leader, Water Resources
miro.kurka@meadhunt.com
918-586-7276



Mike Poe

Project Manager
Mike.Poe@masonandhanger.com
859-280-3551



Reconstruct Runway 13C/31C Columbus AFB, Mississippi

Accelerated design for the reconstruction of a 12,000-FT long by 300-FT wide runway with 1,000-FT paved overruns



Repair Arresting Barriers Savannah ADC, Georgia

Repair of the existing BAK12/14 arresting systems located at each end of the primary runway and placement of new access roads